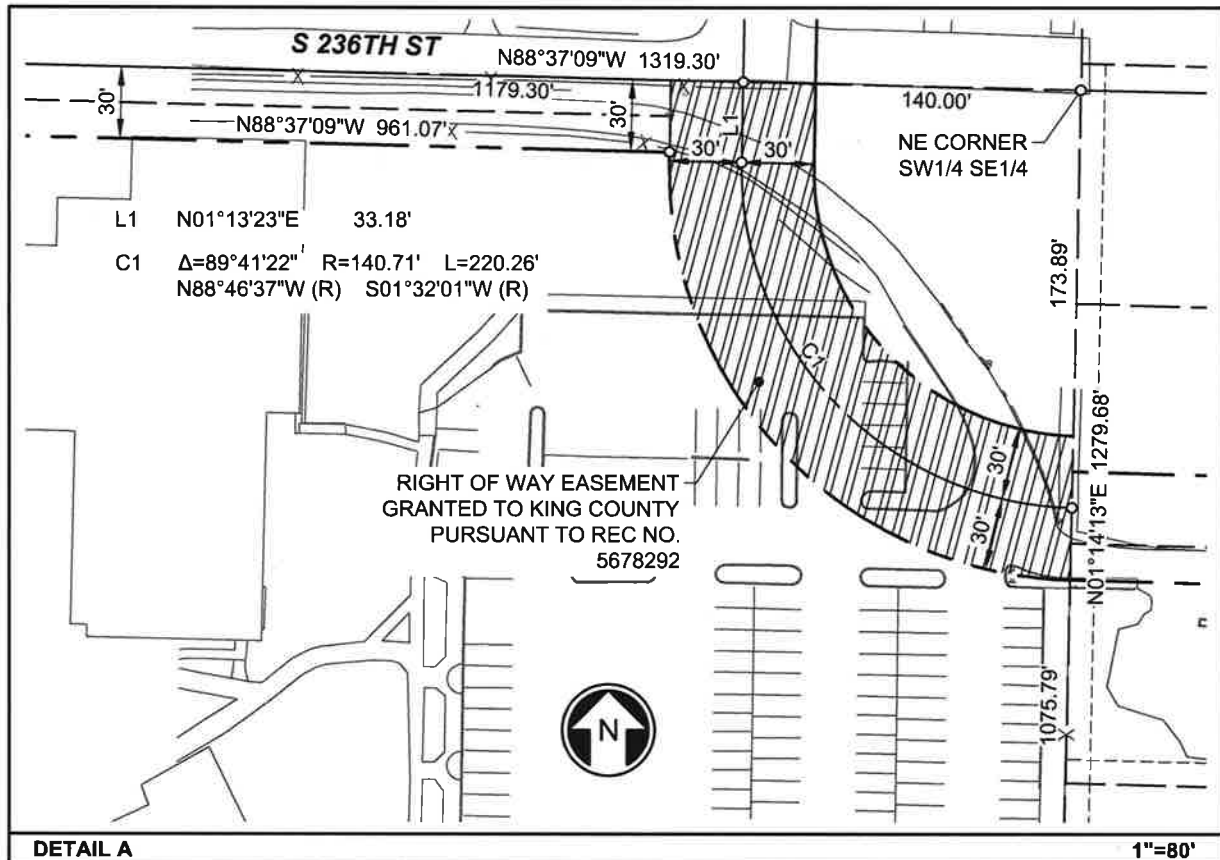
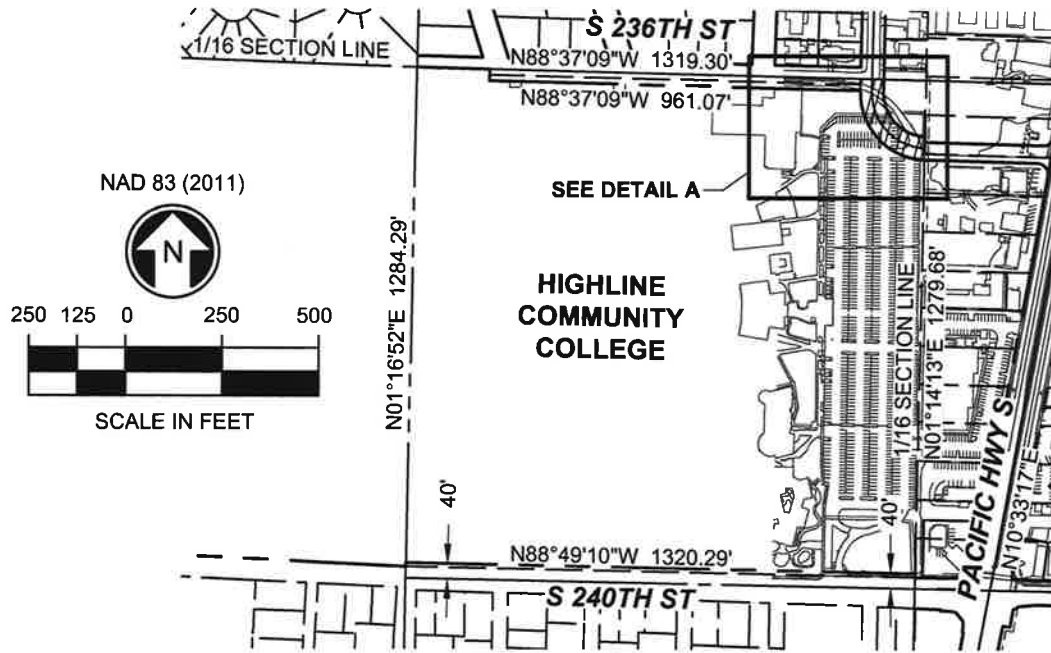


# SOUTH 236TH STREET VACATION

SW 1/4 SE 1/4 SEC 16, T 22 N, R 4 E, W.M.



LEGEND	
	STREET RIGHT-OF-WAY LINE
	STREET CENTER LINE
	PROPERTY LINE

THE CITY OF DES MOINES SHALL RETAIN AN EASEMENT OR THE RIGHT TO EXERCISE AND GRANT EASEMENTS IN RESPECT TO THE VACATED LAND FOR THE CONSTRUCTION, REPAIR AND MAINTENANCE OF PUBLIC UTILITIES AND SERVICES.

STREET VACATION

**HR**

**L & A** LIN & ASSOCIATES

LINK LIGHT RAIL TRANSIT SYSTEM

STREET VACATION AREA:	15,230 SF
<b>EXHIBIT "A"</b>	
<b>R/W S 236TH ST VACATION</b>	
ASSESSOR NO.:	N/A
DATE:	09/06/2019
OWNER:	CITY OF DES MOINES
BLOCK NO.:	N/A
LOT NO.:	N/A
CITY OF DES MOINES	KING COUNTY, WA